



# Process Portfolio

By: Jaqueline Parra

# Development of Initial Ideas



When I was first presented to the project, I had an idea of what I wanted to use for the project. I knew that something like flowers and food would apply to the concept of it disappearing. I also knew that applying the theme of beauty directly correlated with ephemera and the use of flowers. The stimulus of ideas included sketches that I found a couple days before I was presented to the project. When I was young I enjoyed sketching outfits, and different dresses. I thought this was the perfect opportunity to bring those sketches to life. The use of flowers would add an extra level of difficulty. The flowers were difficult to work with due to their fragility.



## Inspiration



Untitled, Cio, Grace. 2016

When searching for an inspiration I wanted to make sure that they had that soft touch that I was looking for in the art. I first found Grace Cio, a famous fashion illustrator that has worked with many other artist like: Chanel, Coach, JW, L'oreal, Fendi, and many others. The delicacy in which Grace Cio places the flowers and how her she was able to use the flowers to make a realistic interpretation of the dress. I wanted to incorporate the sensibility that Grace Cio portrayed with her art. I was also inspired by the art movement, Art Nouveau. Alphonse Mucha incorporated the flowers to give the art work a feminine touch. I liked the sensuality that is demonstrated which is why I decided to use it as one of my inspirations. I also really enjoyed how Mucha was able to use his painting techniques to create a contrast between beauty of the women but also the beauty of the flowers for both of them to stand out.



Mucha, Alphonse. "F Champenois Imprimeur Editeur" Web. 2016..

# Experimentation



For my experimentation, I decided to experiment different methods of gluing or attaching the flowers onto the fabric. At first I went to a retail store to get a set of flowers to experiment with. The first thing I noticed was that the receptacle of the flower was quite large so they wouldn't hold onto the fabric because the flower was too heavy. I then tried the sewing method but it just took too long and I noticed that it would get a lot more difficult when I got to the center of the fabric. I tried the fabric glue but as seen to the right, it wasn't strong enough to hold the flower so the flower fell apart. After these methods not working out I decided that the most efficient way to create this dress was to use a hot glue gun. The hot glue will allow the process to speed up and it would also provide support for the flowers.



## Reflection and acquisition of skills



Throughout the whole process of my art piece, I had to face a lot of challenges. Yet I think I did a good job with focusing on my overall theme. I think maybe people might look at it at first glance and think that it is just a dress made out of flowers, but once they keep looking at it and thinking, they can find the deeper meaning to it. This process was also challenging because I have never worked with any of my materials besides the hot glue gun. It was almost like a learning process as well experimenting with different fabrics, flowers, and materials to attach the flowers to the fabric. Yet overall I was satisfied with my final outcome, and I think that it also meets the requirements I was given. It was an overwhelming experience, yet it was quite enjoyable. I enjoyed making my ideas in real life, I've always wanted to do such thing but the opportunity never came. I wouldn't doubt wanting to this again.



# Inspiration

My piece was inspired by my own culture. I grew up in a family who is very proud of their roots, and the customs were taught to each of us. In the Mexican culture it is used that in each family reunion we all sit in a big table and play a table game called La Loteria. La Loteria originated in Europe but came to Mexico by way of Spain. People often refer to it as the “Mexican Bingo”, and that is pretty much what it is. However, the difference between the Mexican bingo and American is how visual, and how much more fun it is to play la loteria. The best part of it is there is many different ways to play this, that there are no specific rules to playing it. As a true Mexican we each make up our own rules, and that is just part of the tradition. Another Mexican custom is the traditional dancing called Folklorico dancing. The Mexican Amelia Hernandez in the 1950’s, founded the first folk institute in Mexico City. This ballet is usually accompanied with mariachi music.



Generally, male wear black slants and wide sombreros, while females wear full colorful skirts with either white or black boots. During the inspiration I wanted to look for the artist who used their tradition as their main focus for their artwork. One of the artist who focused on his Mexican culture was Diego Rivera. Diego was the most visible figure in Mexican muralism. He emerged in the 1920's when he began to paint murals, during the Mexican revolution. Diego began creating art and murals at the age of three after the death of his twin brother, and began drawing the walls of their home. His parents instead of punishing him, they installed canvas and chalk boards. One of the most famous painting was "The Flower Carrier". The colorful painting display a peasant man in white clothing with a yellow sombrero, struggling on all four



The Flower Carrier.  
Diego Rivera. (1935)

# Experimentation

I had previously done a dress with flowers but the structure was quite different to this one. It was difficult to create the dome like structure at the bottom of the dress. I first attempted creating the dress without the cloth base. I was gluing the loteria cards straight to mannequin. This gave me no outline to follow therefore the cards had no alignment and the cards were crooked. The picture to the left in the middle shows the results when this method was followed. I decided to take everything apart and start from scratch. I placed an unused shirt as the base for the top. For the dome like at the bottom I inserted a dress hoop, and instead of laying the card flat I created a crease and folded the card thus creating a more voluminous skirt. The final result is seen in the picture to the right, and there is an obvious difference between the first choices made compared to second.



## Reflection and acquisition of skills

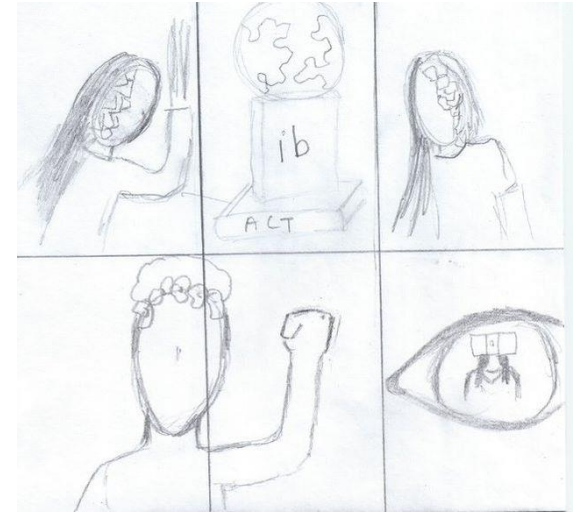
Throughout the process of creating this piece of art, I was really connected to the memories that each and everyone of those cards brought. Being able to remember all the happy moments I had spent as a child with my family just playing "Loteria". I actually had a lot of fun creating this piece. Ever since I was a little girl I enjoyed sketching dresses and outfits on a piece of paper, and now that I'm older I still find it really enjoyable. I believe that this piece represents the Mexican culture in many different forms. First of all the loteria cards represent a big part of it, and the dress represents another aspect of the Mexican culture whether it's the quinceanera or a traditional folk dress.



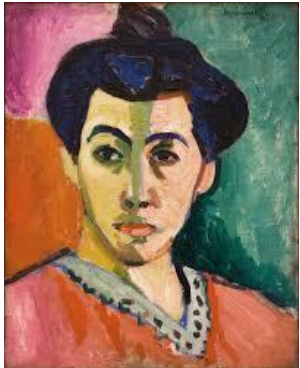
# Development of Initial Ideas



Finding a theme for this triptyc was the hardest part. There was so many themes I could pick from and so many ideas. I ended up choosing the theme of pleasing everyone except yourself. At first I had no idea what I wanted to do, I was having a lot of trouble thinking of what I should do. I brainstormed, and tried thinking of different themes and different styles that I could work with. At first I wanted to do something with stereotype, but this theme is highly repetitive.



## Inspiration



I was inspired by Longo work, American Psycho. His intentions were to transform commercial and cinematic images into huge paintings to project the violence of the city at night. I similarly used this same concept to portray the stress that I feel as teacher keep piling up the amount of work.





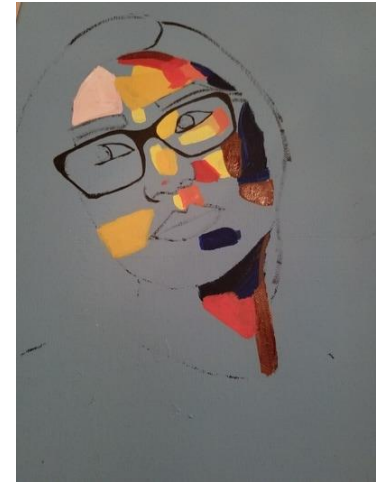
# Process



Painting is my favorite part of the process. The playing of the colors and experimenting with shading is quite enjoyable and relaxing. First I started off with my background color. Two layers of color were needed for have a completely opaque background. I then used the transcription method to transcribe the image onto the canvas. I began by painting the faces of each canvas so that I would have an idea of how it would look, and if it would be necessary to change my method.



I began to use bright color to illuminate the face, but I noticed that these colors weren't creating the effect that I wanted. I decided to use cooler hues instead, and that seemed to work. Also, for a better saturation of the paint, I created a white base on the face. This help the color adhere a lot better, and show the real vibrancy of the hue. I also wanted to have a contrast between the background and the colors used in the people which is why I used the bright red as the shirt to distinguish between the foreground and the background.



## Experimentation:

As seen in the image to the left, the initial shirt color for the portrait was a dark blue. Although the shirt was a darker color there still wasn't enough contrast therefore I decided to change the color of the shirt to red to create a higher contrast between the shirt color and the background. This would also include a mixture of both warm and cool colors.



The color swatches were removed because it created a distraction from the focus and it was not aesthetically pleasing.

When I began to paint, I was experimenting with different color and shades that can correlate with my overall meaning of the piece. As mentioned before, with applying very warm colors to my face, but I was not convinced with how that was looking. Down below you can see the difference of how I began to paint. I was adding a lot of warm pastel colors at the center of my face. Second picture shows how it began to change the effect as I used cooler tones.

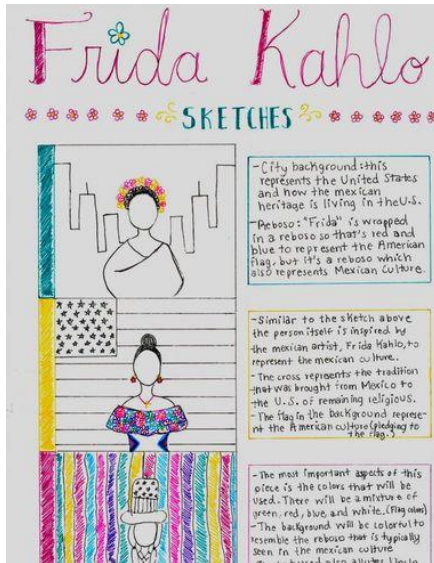




# Reflection and acquisition of skills

Throughout the process of painting I encountered quite a few of barriers. First finding my theme, when I thought that I had a theme set in stone, it ended up changing. I do know that the only thing I was sure was the fact that I want my inspiration to resemble the work of Longo. Also one of the major changes was the my middle canvas. At first I had planned to do another picture of myself, but I thought it would be kind of to abstract, that the viewer wouldn't get the main message. I decided to make it a little more straight forward and represent my world balancing on top of books and tests. Overall I'm happy with my final piece, and I think it portrays exactly what I wanted.

## Development of Initial Ideas



I created three different sketches that represent the different ideas that I had to portray one theme, assimilation. For this project I wanted to take a personal situation that most of my family has gone through, which is why this piece is so special for me, therefore put more effort into it. To the left are some sketches that I created along with a theme that represent my culture. The bright colors, the flowers, and the dresses. I decided to use the first sketch because it was not only the most aesthetically pleasing but it was also the most straightforward in regards to communicating meaning. When sketching I realized that the artist who has inspired me to this is none other than the Mexican icon Frida Kahlo.



# Process

I first began with painting the background. For painting the background I used acrylic to paint because acrylic paint dries a lot faster than oil paint. In the image the background appears as yellow background, but in reality there's a touch of green to it. I wanted to paint the background a bright green because Frida Kahlo used bright hues in her painting. Next I used the graphite transfer method to transfer my initial image onto the canvas. I printed the image that I wanted in order to keep the proportion accurate. When using this method, the limitation is that it takes much longer to transfer the image compared to using a projector and projecting it onto the canvas. This is because there is a lot more steps to it than if I were to project it. But the main idea of transferring the image is to create a template so that I can apply the paint and from there add dimension.

When beginning to add paint I decided to start with the components that would be done in acrylic paint first. I decided to do this because of the time it takes for acrylic paint to dry, and I figured that doing this would prevent me from being messy in case I accidentally painted acrylic paint near oil paint that was still not completely dry. I began painting the flowers that and then moving on to eyebrows and eyes so that when I started painting with oil paints the pencil would not disappear therefore I had an outline to follow. To start of the with the oil paint I began with creating a main shade I would later modify either by adding white or adding brown to lighten it or darken it. To this initial color I added more white to create the highlight shade. Using different shades would help create a dimension to the face so that there was not a flat face.



## Process Continued



I began adding contours as well as the middle tone to add a transition from the highlight onto the shadows. I outline each of the contours to add some more dimension into the face as well as some color so that the face wasn't so white. The contours are placed around the perimeter of the forehead and onto the cheeks to create cheek bones. Also brought down to the jawline to differentiate from the face to the neck. The colors are then blended to create more realistic features. You can no longer see the different lines of colors that were seen in the image above. You are able to see the dimensions of the facial features. One thing that I disliked about this product was the face was a lot darker than what I wanted which made me go in again with more highlights. I also decided to not bring the contour of cheekbones so far out, and just kept it for approximately an inch from the perimeter of face into the cheeks. I worked with both mediums of oil and acrylic. I decided to use the oil paint in this case because of the completely different results that oil paint allows me to create. In the picture to the right you can observe a smooth blending that is coming together after a few layers of colors. I also added some color to the cheeks which is one of Frida Kahlo's iconic look. Although the blending is starting to come together, the forehead is still not blended enough because you can distinguish the breakage between the highlight and the contour.



# Inspiration



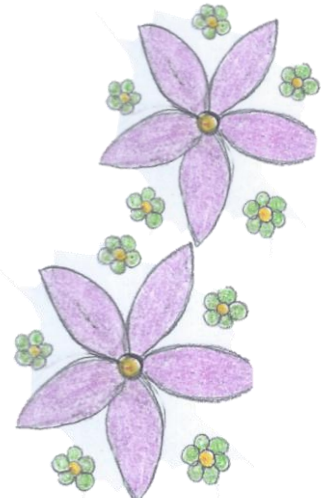
Kahlo, F. (1940). Thorn Necklace and Humming Bird [Painting found in Harry Ramson Center, Austin, TX].



Frida Kahlo is a Mexican icon is well known for her self portraits. Kahlo represented the Mexican culture with These self portraits included bright vibrant colors and ironically the meaning behind most of her paintings were about pain and suffrage. The community considered Frida Kahlo's work inspired by the surrealist movement, but Frida Kahlo her self denied this by saying " They thought I was a surrealist, but I wasn't. I never painted dreams. I painted my own reality. " Although Frida did not consider her self a surrealist painting there are certain aspects of her art that are very similar to those who characterized the surrealist movement. For example the desire to push against the boundaries of socially acceptable behaviors and traditions in order to discover the artist true nature, and that is something I decided to incorporate in my piece of art by portraying the different symbols that characterize the two cultures. This is also seen in one of Frida's painting names " Dos Fridas" seen to the below. In this painting she combines her feelings as she portrays the contradiction of feeling that she has and in a sense a type of lost of identity because she does not know who she really is. This loss of identity had a lot to do with her relationship with artist, Diego Rivera, and their unstable relationship. Yet there is no reason to challenge something that the artist her self stated, the quote that was mentioned before inspired me to pain my own reality. I'm not painting what I wish my residency in this country is like, I am painting the conflict of living in between two completely different cultures and assimilating to one of them or even combining both culture and forming a brand new culture of your own. combined aspects of these paintings that are influenced in my painting. The structure of my piece of art resembles Frida Kahlo's Thorn Necklace, yet the meaning of my piece is really similar to the one in " Dos Fridas". Some techniques that Frida used was her use of bright vibrant colors which is great influence to my own work. As well the high kontras between the background and foreground.



Kahlo, F. (1939). The Two Fridas [Painting]. Museo de Arte Moderno , Mexico City .



# Experimentation



At the beginning of the process I wanted to experiment with the different mediums which is why I tested blending with acrylic and oil paints. I thought that the blending was facilitated with the oil paints, but drying time took days which would cause a problem. If I painted the background with oil paint then it would take a longer time for me to start the actual figure which is why I went with the acrylic paint. At the beginning I only painted four flowers on her head. I thought that it was missing some more flowers to complete the look which is why I added more flowers to her hair. The addition of these added more vibrancy because there was more contrast between the lime green color and the red flowers, as well as the black silhouettes of the buildings in the background.



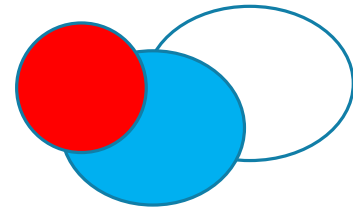
# Reflection and acquisition of skills

I am really happy with the final results. I believe that the meaning that I wanted to get across was really done in an effective way. I think that I also did a good job making the connections between Frida Kahlo and myself. There's an obvious resemblance between the two paintings in the way that it is set up and the way that person in my painting is has certain characteristics that symbolize Frida Kahlo. For example the flowers in her head and the bright cheeks that characterize Kahlo. One thing that I will change is the background. I will add more building and I won't make them similar because it really does not look right. I will also do some of the building in different shades as well as add a sunset of something to resemble the city of Milwaukee as seen to the right.

## Development of Initial Ideas



Incorporating the DACA program in my art was my main focus. All the decisions I made surrounded the Dream Act theme/concept. At first I was skeptical about referencing Donald Trump because of how controversial he has been and because I did not want to offend any supporters, and it's important to keep in mind that offending someone was never my intention. I wanted to portray the perspective of my own culture and how we feel when we get attacked by the president of the people. I also wanted to show that even when certain people don't want us to succeed, we will succeed. I created three different ideas all revolving the same concept. This is seen to the right.





# Inspiration



AP Photo/Jacquelyn Martin



Roy Lichtenstein, Popeye, 1961, oil

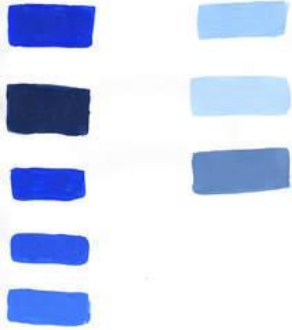
The DACA program was a program that was signed by president Obama administration that allowed undocumented people who arrived to the U.S. as children to received a temporary social security number and a work permit. This program allowed over 800,000 immigrants to come out of the shadows and finally begin living the American Dream. They have now become our teachers our doctors our engineers, and with the decision of Trump's administration to remove the Dream Act, he is also removing the dreams of 800,00 people that over the last few year have been able to receive and education, they have paid all their taxes, they work, they help the American community because although they weren't born here, all they know is this country, besides that, it was not their choice to migrate to the United States, they did not take that decision. Now with the removal of the Dream Act thousand of these beneficiaries will go back to living in the shadows. That is why I wanted to create a piece that showed that they are not alone. I as an American citizen will fight for those who are scared to step out in fear of deportation. I also wanted to incorporate the artistic inspiration of the pop art movement. Pop art was highly seen in American artist and I wanted to explore their perspective of the American culture. Roy Lichtenstein is one of the most recognized pop art artist. He was an American pop artist that used the pop culture as the main focus of his paintings. This made his work controversial, and a lot of the population would criticize his work. A lot of his art resembled comic strips and cartoon which is what I wanted to imitate in my piece of art. One of his most famous paintings is, "Popeye". The piece contain Popeye and his rival Bluto. People say that he used this way of art to communicate that he does not care about what the critics say. In a way this resembles what I was to do with my work where art is used as a response to actions of other people.

# Process

First I began by painting the background a bright red. The colors used in each of the canvases are used for a reason. First of all red represents the republican party and also red is found in the American flag. Also, the color red is sometimes seen as color of fear and error. I then sketched the face of the person as well as the speak bubble where I would write things that this person has said to the immigrants of this country. I then proceeded with the hair, this part was definitely the one that would make the "anonymous" person not so anonymous. Once the first canvas was done I began by adding the blue background to the second canvas. Getting the right shade of blue was quite difficult because I did not want it to be such a rich dark blue color yet I still wanted to resemble the American Flag color. Once that was spot on I sketched the top bubble where I would put the title of dreamers. Then with white paint I sketched the graduate. The graduate represents those dreamers whose dream is to graduate and that rebuttals the argument that the person from canvas 1 has said about them and their community. Then I painted the butterflies. The butterflies symbolize the immigrant community. Lastly I did the last canvas of the tryptic and for this one I just wrote the statement of Defend DACA for the audience to have an interaction with the piece and also interact with the cause.

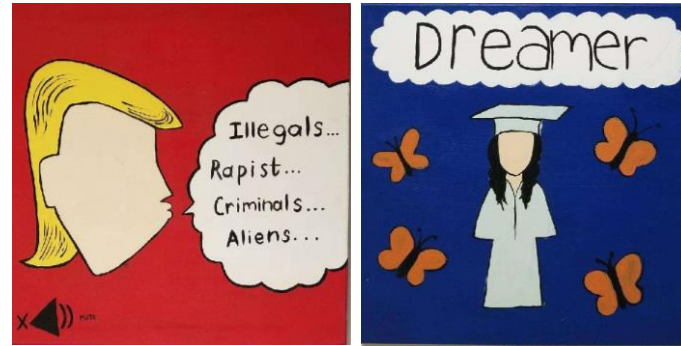


## Experimentation



## Experimentation

To the right there is swatches of the multiple different trial that it took for me to get that perfect blue for the background of the second canvas. The different swatches are also labeled from 1 to 9, this shows the ranking that I gave these colors. The reason why I decided to use swatch number one for my background is because it was the closest color that resembled the American flag color and also, it was light enough to create that contrast among the dreamer and the background.

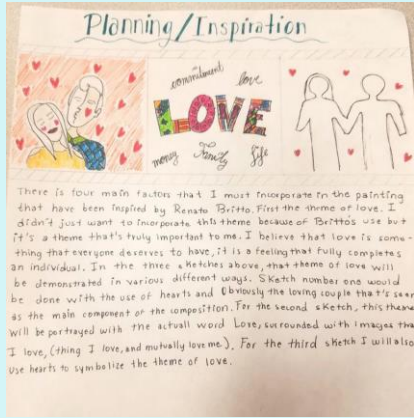


## Reflection and acquisition of skills

When I was doing this piece there was a lot to take in consideration. I did not want to offend anyone but I also wanted to support my community. A community that has been attacked by the country and by its government. I wanted to show that what the figure from canvas #1 has been saying is not true. Dreamer are normal people with the dream of having a career and being able to form a family in American ground. They are as Americans as a legal citizen. That is why this piece has meant so much for me. Now analyzing the medium used and the way I portrayed it hasn't been the best. I believe if I would have photographed the life of a dreamer then it would be more impactful for the audience, why? because that's when they would realize dreamers are just like us. Using pop art made it look more like a cartoon, and that's something I am not happy with although it might catch the attention of the audience because of the bright colors.



## Development of Initial Ideas



When I began my planning I already knew who I wanted my artistic inspiration to be. I knew that Romero Britto was the one that I wanted to recreate. Therefore I wanted the themes as well as the style to remain constant. I chose the work by Romero Britto of "passionate" because it was the one that I mostly identify with. I did a total of three sketches that were all option for my work. I chose the first one because it the one that I esthetically likes the best and the one that would also let me incorporate as much as Brittos does with his art.

## Inspiration



Romero Britto is originally from Brazil but grew up in the streets of Miami, Florida. He did not quite live in a safe neighborhood which is why in his art he wanted to show the opposite of violence and what he had grown up to knowing as normal. He was inspired to use love in his art. From a young age, Britto showed his interest in art and the desire to pursue a career in it. He was self taught, and he began his art with the use of scraps of paper and cardboard. This humble beginning has taught him to appreciate and help young artists today with limited resources. His work is known for its vibrant colors as well as the positive vibes that are portrayed from his artworks. Britto's goal as an artist to use art as a language to communicate "optimism and love", as stated by the New York Times. To this day, Britto has been able to accomplish huge dreams by working by huge companies like Apple and Disney. His style is identified as a pop art/ cubist style, and the majority of his works are to portray love and peace, quite the opposite of what we see today. His use of bright colors and flat texture resemble the pop art movement.

# Inspiration Continued



"Cheek to Cheek" Romero Britto,  
britto.com.

His use of multiple geometric shapes resemble the cubist style. Also going back to the theme of assimilation and love, love is a feeling that needs to be assimilated by the significant other. The artwork to the right is titled "Passionate". This acrylic painting is portrays the expression of love between a male and a female. Britto is known for his positive take of negative events that are going on during the time period. Interestingly when the rates of divorces keeps going up, Britto pictures the happiness of marriage. Britto could have use this artwork to persuade marriages that at the end of the day there is always love, and that love is essential for the successfulness of a marriage. It's reminding your significant other that you care and that you love. Making that person feel protected. That is why Britto had the man kissing the women on the cheek instead of in the lips because it shows care and protections. There's multiple different things that need to go into a relationship. I wanted to incorporate love how love has the ability to change your life drastically.

## Experimentation

Before deciding to do a acrylic painting, I was considering doing a digital illustration. To the right are screenshot of what I tried doing, yet my lack of experience with digital illustration made me change my mind. I began trying to accomplish my piece with the A6 Photoshop program, and after watching video and more video in order to get it working it still was not helping at all. Then I decided that I can probably sketch my image onto a piece of paper and scan it, so I did that. I then opened the scan image onto the program paint. This program I have been using ever since a kid, and that is where all my imagination started. The pictures to the right show the process that I made until I gave up. I stopped doing this method because I did not have the versatile to create my own colors like I would with paint. Which is why I went bac to the acrylic on canvas. If I would have continues this method, I believe that the image would be a lot more similar to my artistic inspiration, yet I think that I would have not been happy with it.



# Process



Before drawing my image onto the canvas I first painted the canvas with a warm light orange. I used the orange because it is a warm color and what I want to transmit with my work is warmth and love. Orange is also associated with creativity and success, success in a relationship and I wanted it to stimulate my imagination as I worked on the paint. Then I chose one of the sketches that I had initially created in the planning process and I recreated it by hand on the canvas. The final product of that can be seen in the first image to the left. Then I began painting. I first began by creating the flesh colors. Flesh colors are probably the hardest to make and I wanted them to be on the spot. I gave the faces about 3 layers of paint in order to create that flat surface with no streaks. I then outlined the eyes and eyebrows and nose so that those wouldn't get lost underneath the layers of paint. I added then the shirts that would be worn by the characters. I decide to do the shirts first because there would be hair that laid on top of it. I thought it would be easier to paint on top of the shirt other than try paint in between the strands of hair. I then painted the hair. At first I was not fully convinced with the hair from either. I thought that the guy sort of looked like a skunk and I also thought the lady looked like an old lady. That is why I replaced the light grey hair for a dark brown and I enjoyed that a lot better. I decided to keep the guy's hair because once the black lines were added it really defined each shape and it looked a lot better. Then it was just up to the small details to complete the composition.

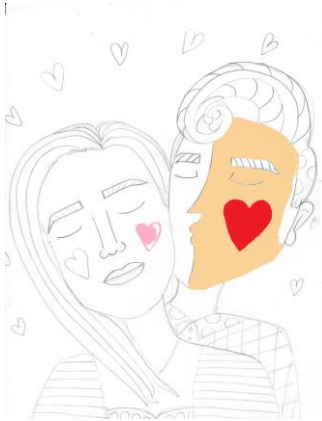
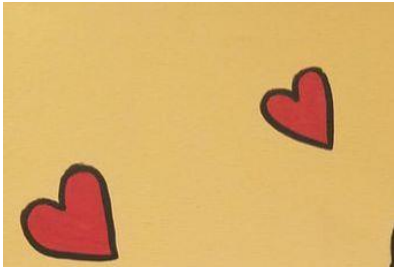


## Reflection and acquisition of skills

Out of all my project this was definitely the hardest one to accomplish. It's simplicity hides hard work and a lot of hours as well. What's really hard to accomplish is the sharp edges that each of the figure need. Also the medium used gave me lots of difficulties. Using acrylic paint can be quite complicated at times, especially when I am working with a budget and have to get acrylic paint that are very water down. To the right is a picture of three layers of paint that I gave one of the hearts and there was still streakiness. I wanted to make sure that there was hardly any streak made from the brush so that it can resembles my inspiration work as well as possible. Overall, I am very happy with what I have accomplished. One thing that I will change is going back in and define those black lines that outline everything in the composition. Those black lines really added a "pop" moment to my painting and it is the best decision I have taken. I also would change the fact that I did not incorporated as much as the cubism movement as Romero Britto does. That is also something I would go in and change.

### Medium Experimentation

Never before had I worked with digital art or the photo shop program. The piece to right shoes some experimentation that I was doing to create a digital collage. I personally think that there could've been a lot more factors to my piece. Maybe if I had more experience with photo shop my piece would've been more thorough and meaningful. I had a lot of trouble getting my ideas together, because I had a lot of ideas, and I wasn't able to produce them into a photo shop file. Also, I was really having trouble with the use of the tools on the photo shop program. At the end of the day, I ended up doing my best, overall, I think that my piece is self explanatory and it really portrays the meaning that I was aiming for. To the right I experiment with a digital art program but my unexperience made me decide to create an acrylic piece instead.



# Development of Initial Ideas



I personally thought that it was important to create that effect of two different faces in order to compare the differences between myself and a person I admire. I created an image that I will later use as a template for my actual drawing. This image is seen to the right. It was hard to line up the face exactly because the dimension of our features were different. My lips plus teeth were much bigger than Emma Watson. Also I wear glasses but it was important that I incorporated that in the work because that is one of my "limitations".

## Inspiration

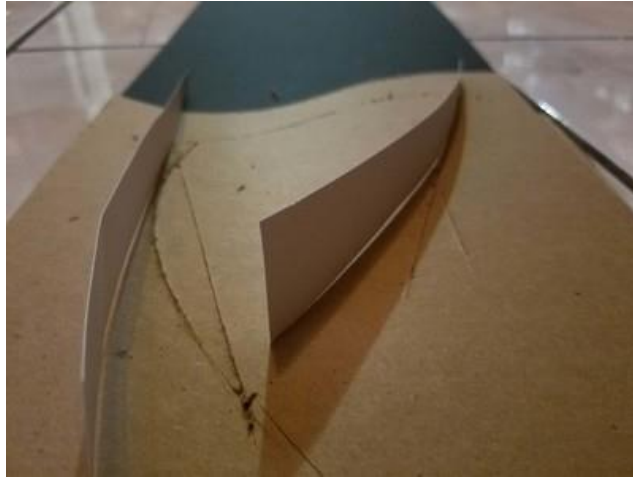
Lately I have been thinking a lot about the transition from a high school student to a college student. The transition has been a lot rougher than what I thought. Maybe even a lot more difficult than the transition from a child to a teenager.

As a child I grew up looking at movies and princesses and all these characters and I always aspired to be like them, and life is nothing like a movies. I always had such high expectations. That is why I wanted to create a drawing that illustrated the reality of both worlds. I thought that maybe the best way to do so was to compare both world by drawing half of my face and the other half would be one of a Disney princess. This idea I saw one day that I was scrolling through social media. To the right are images of the art of the artist that inspired me to use this method. This artist goes under the name of Amanda Lee, also known as Dada and has a page that is linked below where she sells her art. Its main source of medium is color pencils. The color pencil allow the fine details that she uses to color and to create the gradients and smooth blending. That is something that I considered for my art work. Yet I will not use color in both sides, I will only use color to portray the unrealistic side, the princess side, to show the dreamy illusion. The side with my portrait will remain black and white to portray reality as cold and harsh.



Lee, Amanda . "Half-Faced Character Illustration Mashups Inspired by Disney and Hayao Miyazaki."

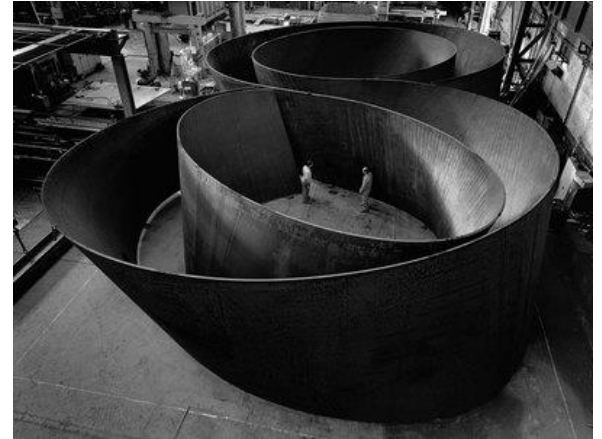
# Development of Initial Ideas



To brainstorm ideas this time I began with planning out my ideas but physically. I didn't necessarily draw sketches but I did create a model to just physically play around with the placing of the sculptures. For most of my pieces I wanted to create a piece that resembled a portal, that's why I would have a small entrance and then it would expand to provoke the illusion of entering a new world. For one of the pieces I wanted to create a resemblance of a river. The way that the streams flow into the lake.

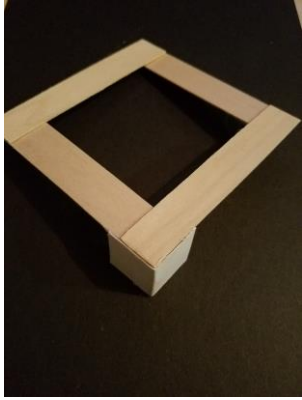
## Inspiration

One artist that really inspired me was Richard Serra. Richard Serra is an American sculptor that has revolutionized the abstract sculpting world. His main goal was to draw attention to the sculptures potential for experience both visually and physically. Serra's inspiration were Julio Gonzalez and Pablo Picasso. Serra created pieces that would captivate the attention of the public, by creating space in which the viewer can experience the universal qualities of nature. Serra would work against natural forces like weight and gravity. His huge pieces of art work would have to defeat the force of the gravity by just standing by itself. Serra's adaptive sensibility in working collaboratively with other American artist, as explored multiple disciplines. Serra's biggest concerns were to implicit the relationship between his sculpture and the intended site. There are multiple art works in museums, and there is one specifically that has been removed in New York.

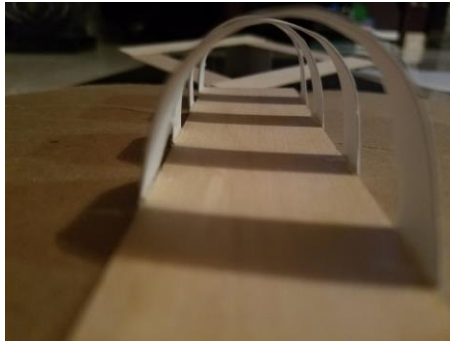




## Process/Experimentation



When I was working on this project, it was so hard to concentrate on one idea because I was overflowing with them. I wanted to do certain things that didn't quite go well together. At first I tried working with arches as seen in the pictures below. When I had that set ready, I kept looking at it and it just didn't convince me which is why I moved on to the next design. I first started with creating the uneven surface of the lake shore so that I could begin creating the design. I began with putting crumpled up paper on the surface and then laid a wet paper on top of these so that the wet craft paper would mold with the layering. Secondly I applied white glue with a brush so that I could stick the sand to the surface and begin applying the components. I decided to do different size circles so that it created the illusion of zooming into the lake. I took the bass wood and create the y-shape and glued it with hot glue gun. Once that was all glued on I began adding all the details. This includes the rocks and green moss, as well as the piping gel to create the lake effect.



The small details are always the ones that make a piece unique





# Development as an Artist

I began the IB Art course with the mindset that the class would only involve creating art work of our favorite artists, but there is a lot more to it. I have found that art is a way to express emotions. Art is also a way to respond to situations that are going on today. I have found a new side of me that finds tranquility when having a brush in my hand. I never thought that art will serve as a therapy where I can say everything I am thinking. I am conscious that there is still a lot of improvement to be made yet I have seen a huge difference from my very first painting to the ones that I keep creating.

I have had the opportunity to work with multiple different mediums such as acrylic paint, oil paint, pencil and paper, found objects, flowers, and wood, and I am looking forward to keep working with these mediums as well as exploring different mediums.

I have also found artist that I will forever be inspired by, Romero Britto and Frida Kahlo. I look forward to keep creating pieces that resemble their work. The IB diploma has been a great and unforgettable experience that I won't ever regret. It has opened me the doors to new ways of learning and new ways of expressing my self that are a lot more powerful than words, and that is the language of art.

